

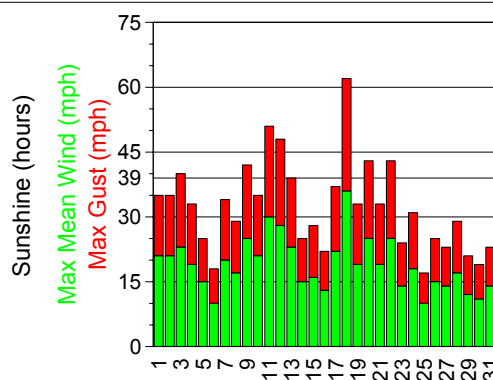
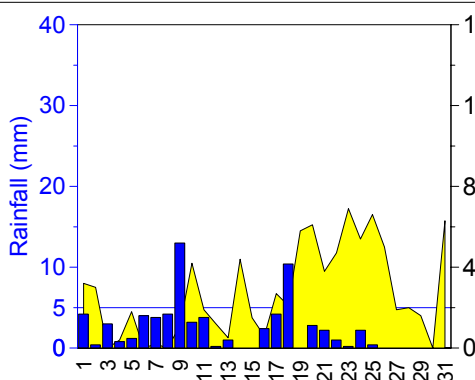
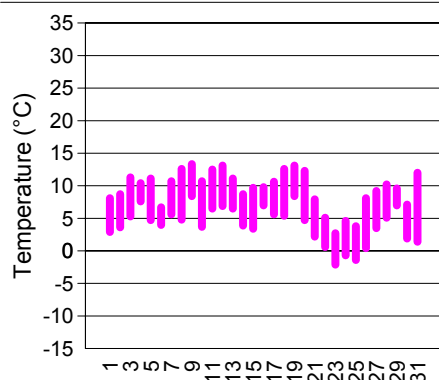
Weather at SAMPLE (MIDLANDS)

January 2007

2:50 PM

Wednesday 04 July 2007

Date	Humidity at 0900	---Temperature---			Sun (hours)	Rain (mm)	----Maximum Wind----			Snow Depth (cm)	Significant Weather
		Max (°C)	Min (°C)	Mean (°C)			Mean (mph)	Gust (mph)	Dirn		
Mon 01st	69%	8.1	2.9	5.5	3.2	4.2	21	35	WSW	0.0	Ground frost (-0.7°C)
Tue 02nd	79%	8.7	3.6	6.2	3.0	0.4	21	35	W	0.0	Ground frost (-1.1°C)
Wed 03rd	93%	11.3	5.3	8.3	0.0	3.0	23	40	SW	0.0	Gale force gusts
Thu 04th	75%	10.4	7.6	9.0	0.4	0.8	19	33	W	0.0	None
Fri 05th	93%	11.1	4.7	7.9	1.8	1.2	15	25	SW	0.0	Ground frost (-0.1°C)
Sat 06th	94%	6.7	4.0	5.4	0.0	4.0	10	18	SSW	0.0	Ground frost (-0.3°C)
Sun 07th	94%	10.7	5.6	8.2	0.2	3.8	20	34	SW	0.0	None
Mon 08th	88%	12.6	4.8	8.7	0.0	4.2	17	29	SW	0.0	None
Tue 09th	84%	13.3	8.4	10.9	1.1	13.0	25	42	SW	0.0	Gale force gusts
Wed 10th	91%	10.7	3.7	7.2	4.2	3.2	21	35	SW	0.0	None
Thu 11th	85%	12.5	6.5	9.5	1.9	3.8	30	51	W	0.0	Severe gale force gusts
Fri 12th	87%	13.1	6.9	10.0	1.2	0.2	28	48	WSW	0.0	Severe gale force gusts
Sat 13th	91%	11.1	6.5	8.8	0.5	1.0	23	39	SW	0.0	Gale force gusts
Sun 14th	80%	8.7	3.9	6.3	4.4	0.0	15	25	W	0.0	None
Mon 15th	76%	9.7	3.4	6.6	1.5	0.0	16	28	SSW	0.0	None
Tue 16th	95%	9.8	7.0	8.4	0.6	2.4	13	22	SSW	0.0	None
Wed 17th	89%	10.6	5.6	8.1	2.7	4.2	22	37	WSW	0.0	None
Thu 18th	80%	12.6	5.4	9.0	2.1	10.4	36	62	W	0.0	Storm force gusts
Fri 19th	68%	13.1	8.4	10.8	5.8	0.0	19	33	W	0.0	None
Sat 20th	78%	12.3	4.7	8.5	6.1	2.8	25	43	WSW	0.0	Gale force gusts
Sun 21st	78%	7.9	2.2	5.1	3.8	2.2	19	33	WSW	0.0	Ground frost (-2°C)
Mon 22nd	83%	5.1	0.6	2.9	4.7	1.0	25	43	NE	0.0	Snow shower 1230; Gale force gusts
Tue 23rd	78%	2.7	-2.1	0.3	6.9	0.2	14	24	N	0.0	Ground frost (-5.9°C); Light snow 2325-2400
Wed 24th	83%	4.6	-0.7	2.0	5.4	2.2	18	31	N	1.0	Ground frost (-3°C); Snow (1cm) 0900; Light snow 0000-0300; hail 1630
Thu 25th	85%	3.8	-1.4	1.2	6.6	0.4	10	17	NNE	0.0	Snow showers 0036 & 0728
Fri 26th	91%	8.1	0.4	4.3	5.0	0.0	15	25	NW	0.0	Ground frost (-2°C)
Sat 27th	93%	9.2	3.5	6.4	1.9	0.0	14	23	NW	0.0	Ground frost (-1.5°C)
Sun 28th	77%	10.2	5.1	7.7	2.0	0.0	17	29	W	0.0	None
Mon 29th	87%	9.6	7.0	8.3	1.6	0.0	12	21	NW	0.0	None
Tue 30th	76%	7.1	1.9	4.5	0.0	0.0	11	19	W	0.0	Ground frost (-1.8°C)
Wed 31st	83%	12.0	1.4	6.7	6.3	0.0	14	23	WSW	0.0	Ground frost (-2.5°C)



Comparison of January 2007 with normal	Actuals for January 2007	Averages for January	Anomalies for January 2007	Notes for January 2007	
Average Max Temperature	9.6°C	6.7°C	1990-2006	2.9°C	Warmer by day than any previous January 1990-2006
Average Min Temperature	4.1°C	2.4°C	1990-2006	1.7°C	Warmer at night than 94% Januarys 1990-2006
No. days with Min T < 0°C	3 days	8.1 days	1990-2006	-5.1 days	Fewer air frosts than 94% Januarys 1990-2006
Sunshine	84.9 hrs	54.1 hrs	1990-2006	156.8%	Sunnier than any previous January 1990-2006
Rainfall	68.6mm	71.7mm	1990-2006	95.7%	Typical
No. days Rain (>=0.2mm)	22 days	18.4 days	1990-2006	3.6 days	Typical
No. days Rain >=5mm	2 days	4.6 days	1990-2006	-2.6 days	Typical
No. days Snow Lying	1 days	0.1 days	1990-2006	0.9 days	More days with lying snow than 90% Januarys 1990-2006
Average Max Gust	32 mph	28 mph	1990-2006	117.1%	Typical
No. days Max Gust >=30mph	17 days	12.6 days	1990-2006	4 days	Typical